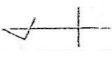


図2 観音寺城石垣使用箇所
(村田修三氏原図に伊庭功氏が加筆して作図)

— 石垣
--- 石垣・推定石垣

0 50 100m



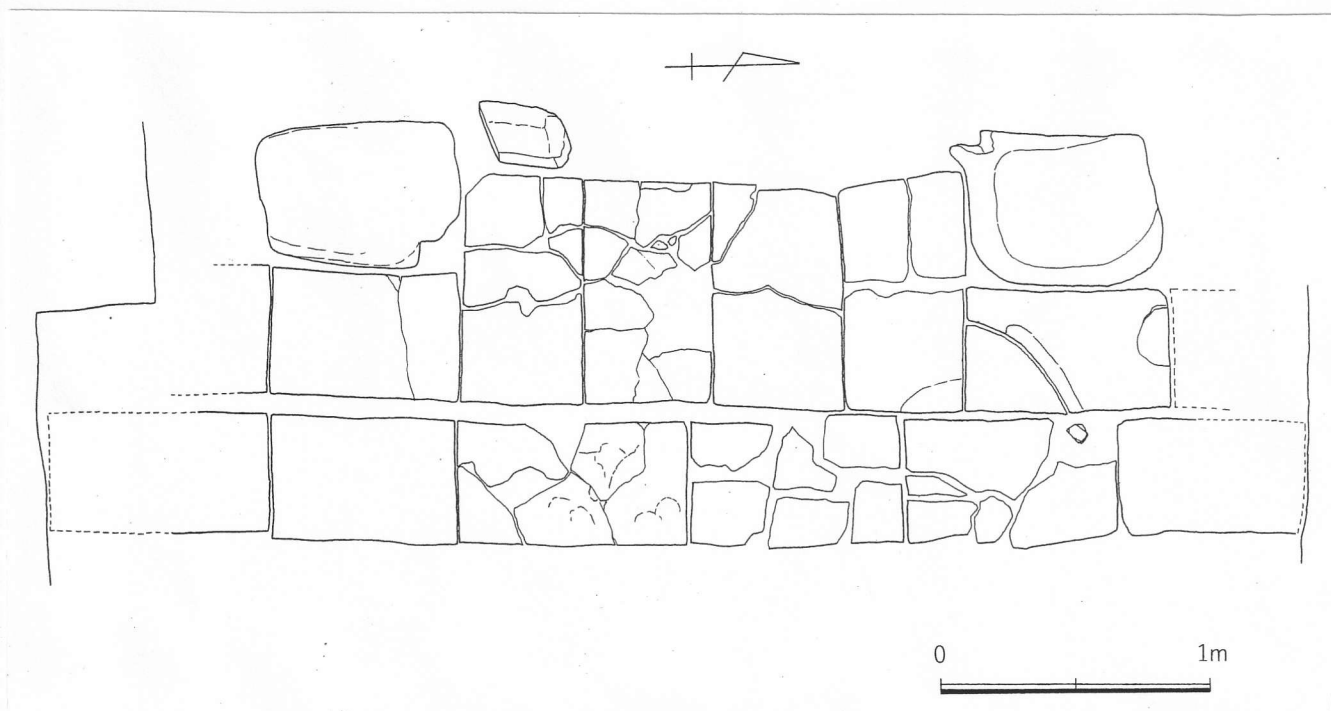


図6 安土城天主台石段中段の笏谷石製の敷石遺構実測図(中井均作成)

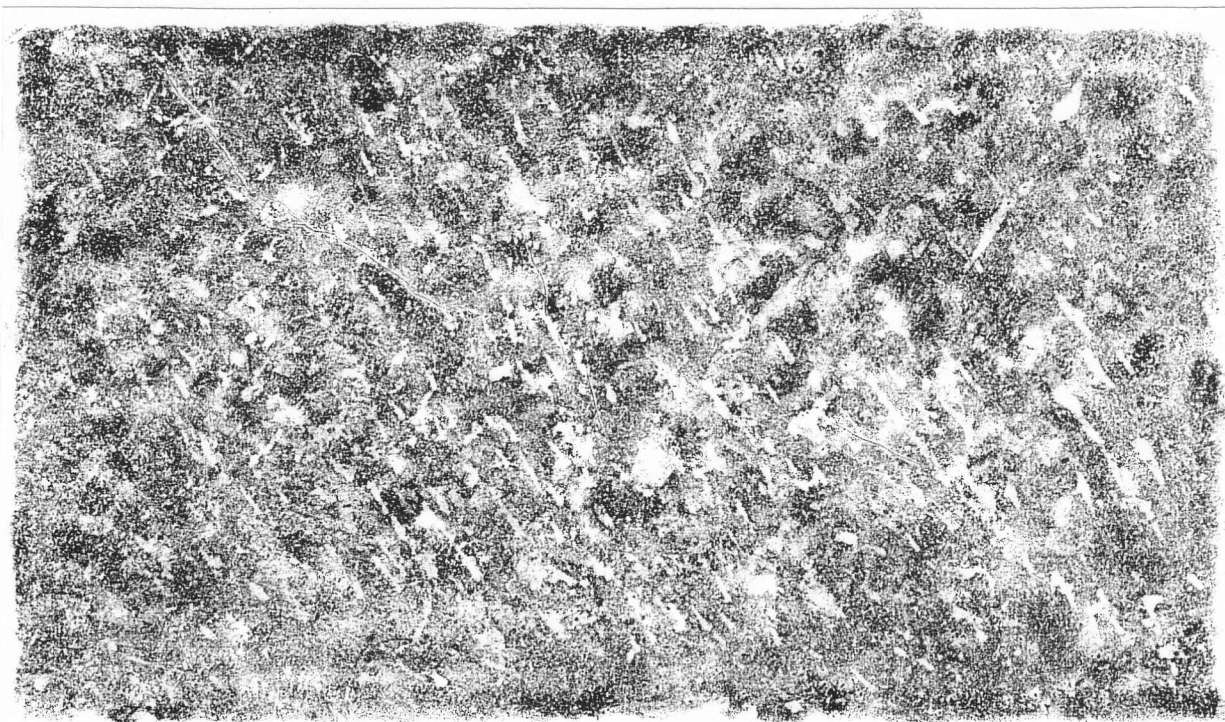


図7 安土城天主台石段中段の笏谷石製敷石の拓本(中井均採拓)

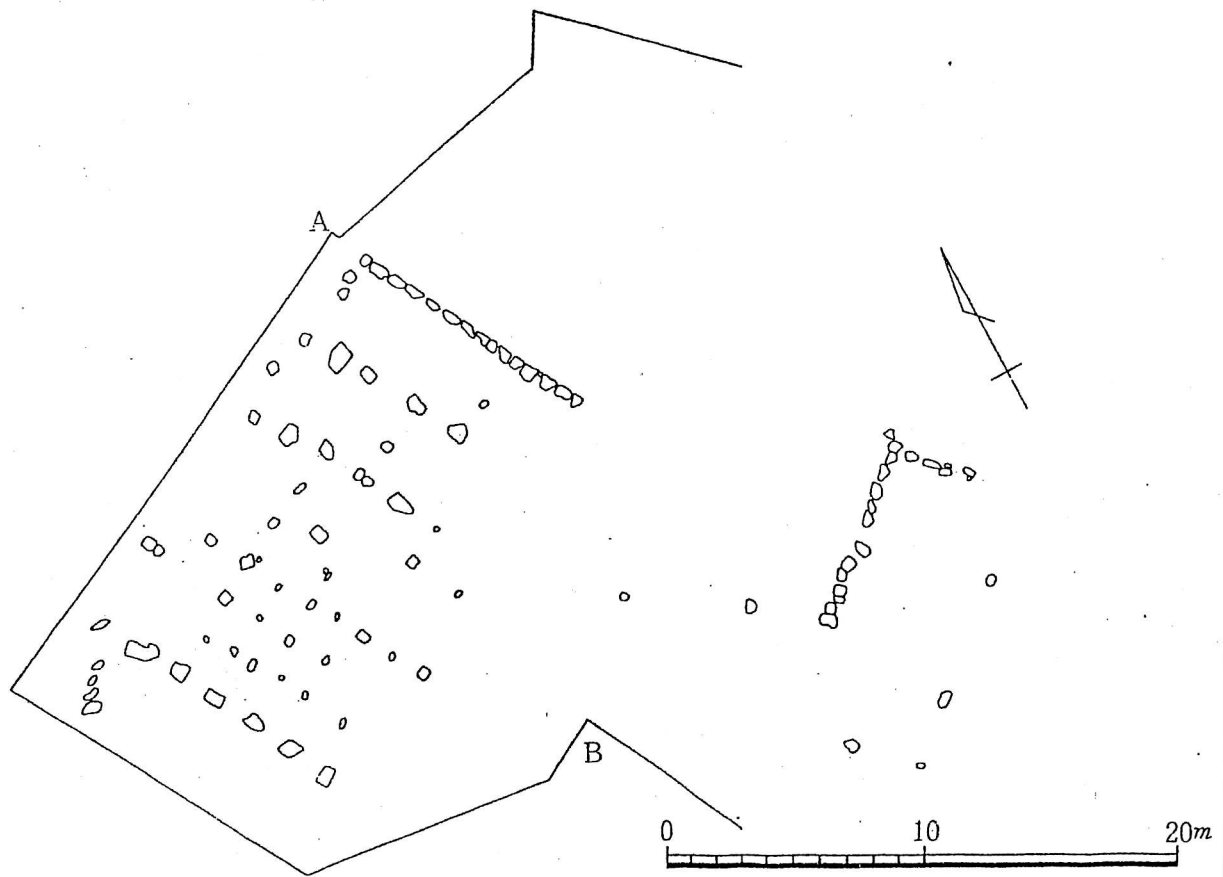


図9 昭和37年の発掘調査検出遺構平面図(中井均トレース)

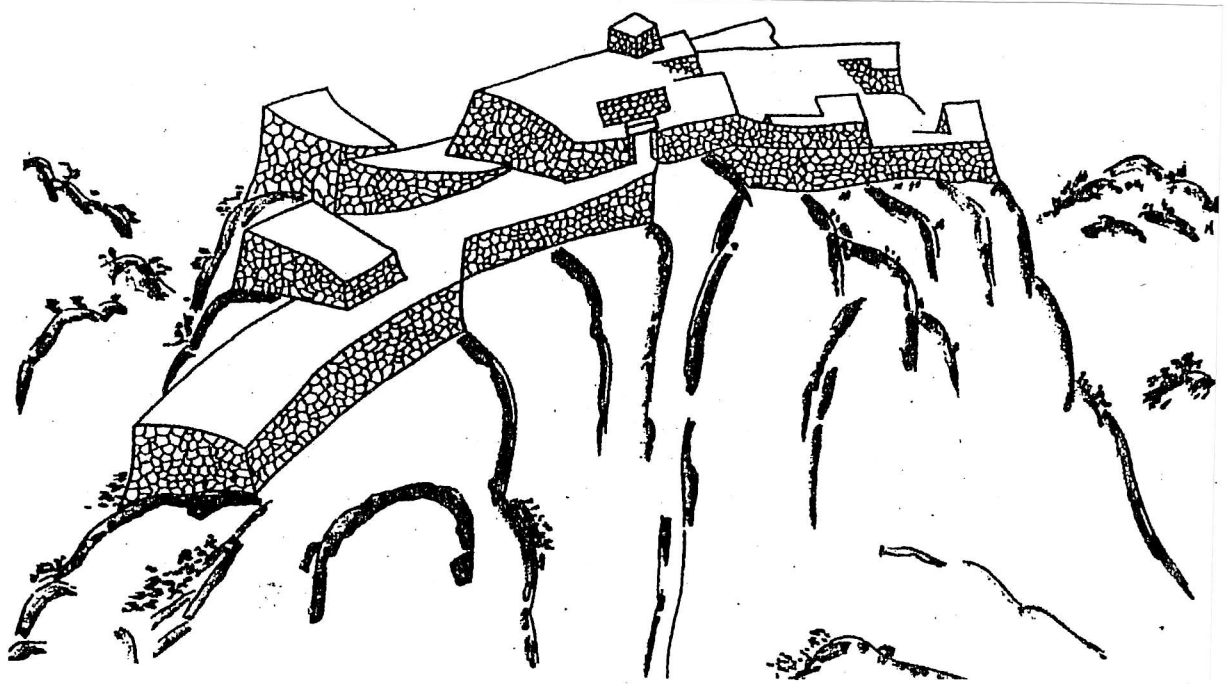


図10 江州蒲生郡八幡山豊臣関白秀次古城之図(中井均トレース)



图 1 観音寺城縄張図(村田修三氏作図)

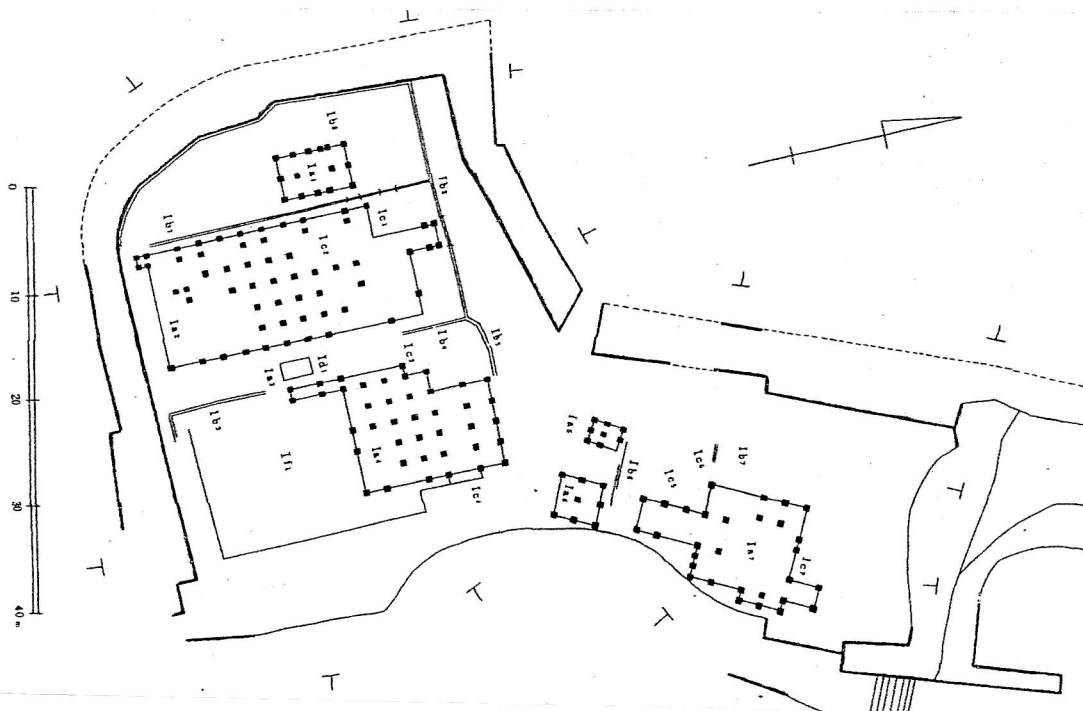
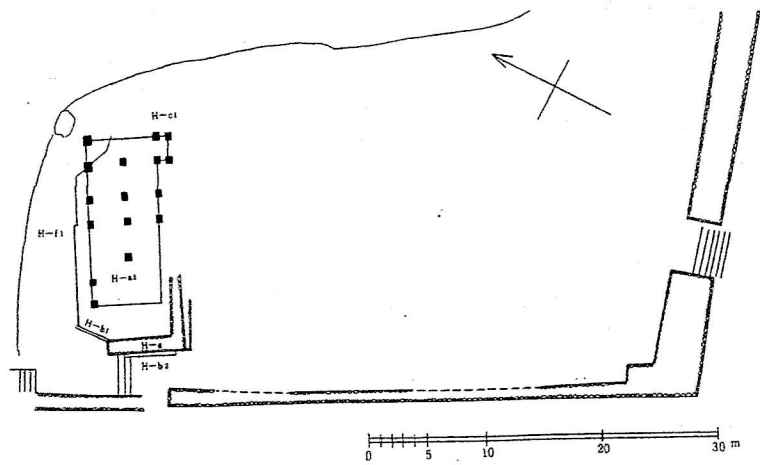
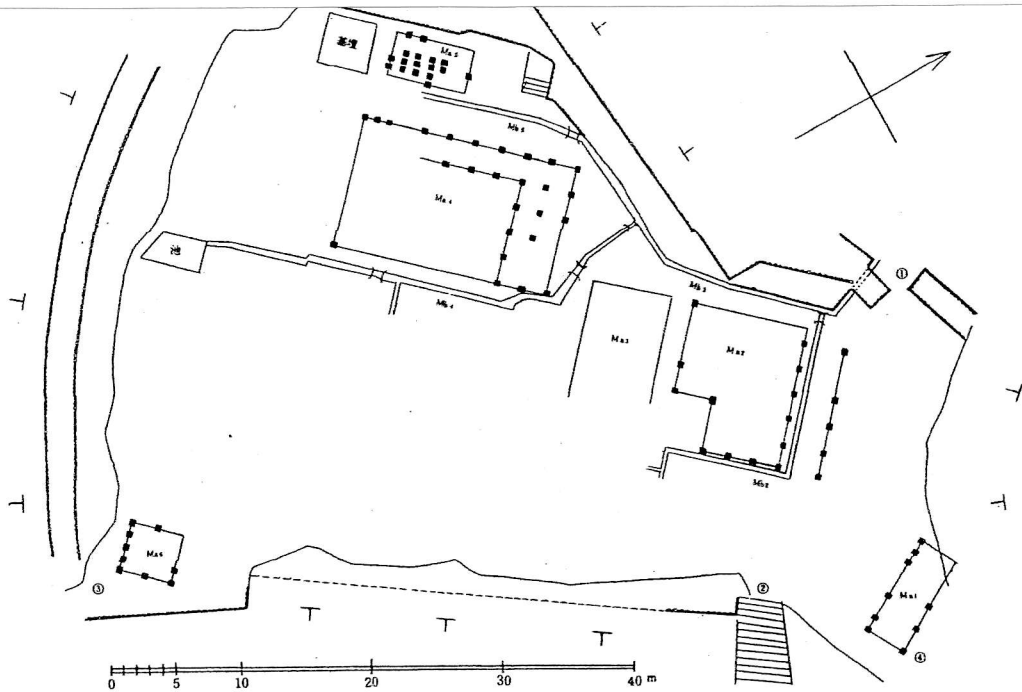


图3 観音寺城検出遺構模式図(上:本丸、中:平井丸、下:池田丸)

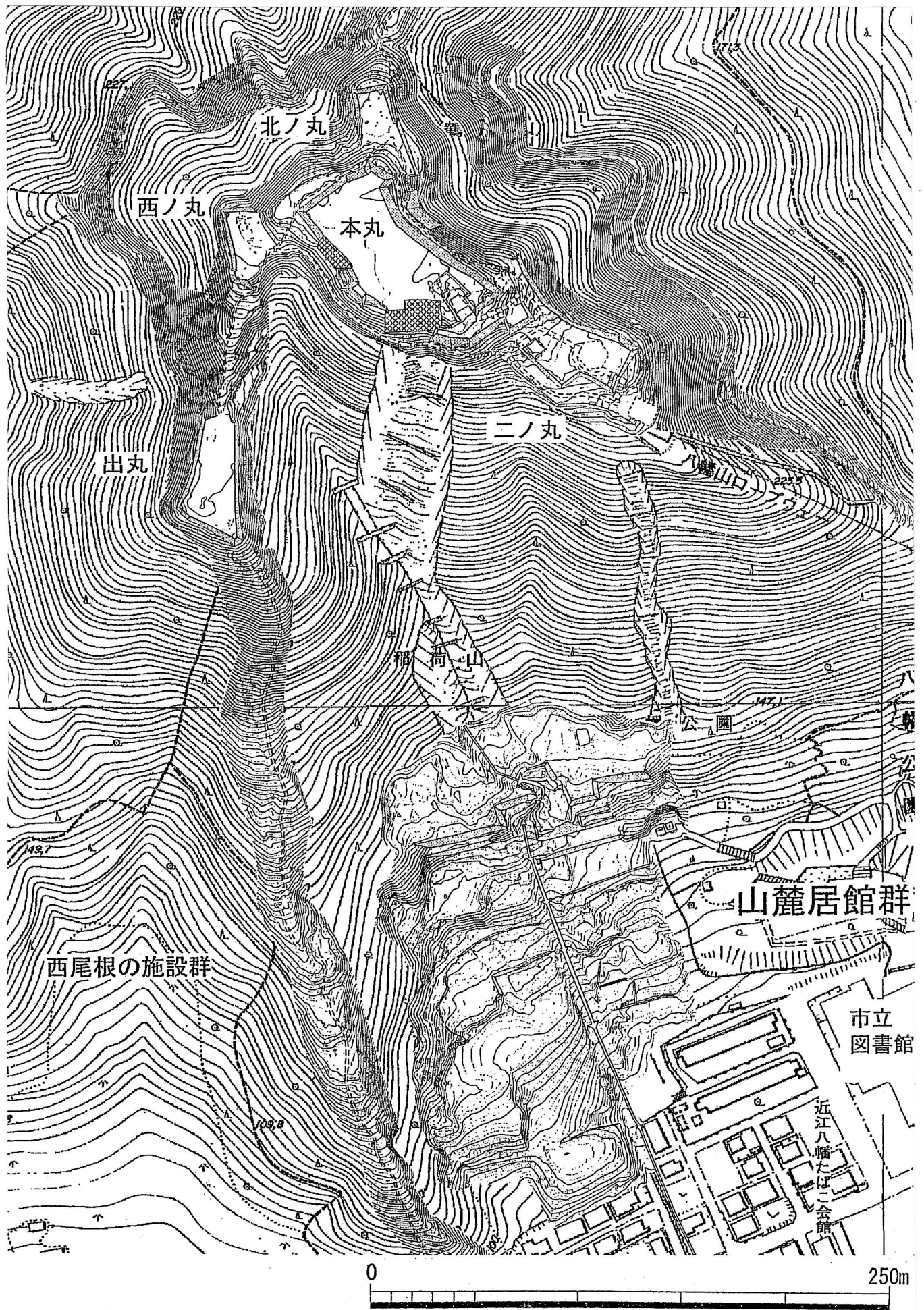


図8 八幡山城測量図(近江八幡市作成)